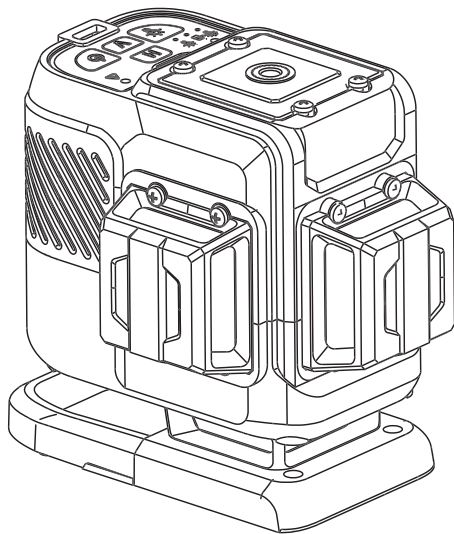


# USER MANUAL

026.3FG 3D FLOOR GREEN



EN ENGLISH

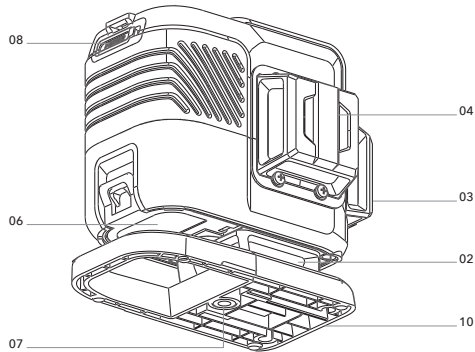
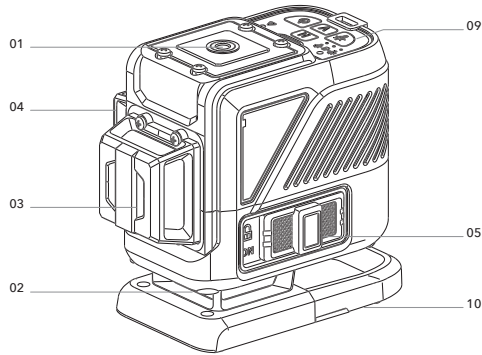
Manual  
in your language?

Check the back cover



**FUTECH**  
futech-tools.com

## OVERVIEW



### ■ LASER

- 01 Upper tripod thread 1/4"
- 02 Lower Horizontal laserexit
- 03 Front vertical laserexit (V1)
- 04 Side vertical laserexit (V2)
- 05 On/Off/Transport security switch
- 06 Battery compartment
- 07 Tripod thread 1/4"
- 08 USB-C Power socket
- 09 Keypad
- 10 Base

### ■ KEYPAD



- A H-button for horizontal lines
- B V-button for vertical lines
- C Receiver / Power safe button
- D Power button
- E Receiver/Power indicator LED
- F Warning LED
- G Battery indicator



## QUICK START GUIDE

KEYPAD	NAME	FUNCTION	
A	H-button	Press	(De-)activate horizontal laser lines
B	V-button	Press	(De-)activate vertical laser lines
C	Receiver/Power safe	Press	Cycles through Full Power, Half Power, and Receiver Mode
D	Power button	Hold	Switch ON device with pendulum locked (for manual slope)
E	Receiver/Power LED	Green	Device is switched on with full power
		Red	Receiver mode is switched ON (Receiver can be used)
		Yellow	Power safe modus
F	Warning LED	Orange, flashing slow	Slope active (pendulum is locked, laser not levelled)
		Orange, flashing fast	Out of self-levelling range
G	Battery indicator		



## SAFETY

Please read the safety instructions provided in the separate booklet provided with the device.

**LASER RADIATION** – Class 2 Laser product. – Do not stare into beam

## BATTERY

This laser can be used with the supplied battery (7.4V, 2200 mAh) or using the supplied USB-C power adapter. The battery will charge when it is in the device while the power adapter is connected. The device can be used while charging.

## FIRST TIME USAGE

Remove all protection foils.

Place the provided LI-ION battery in the device by opening the battery compartment [06]. Make sure the batteries are fully charged.

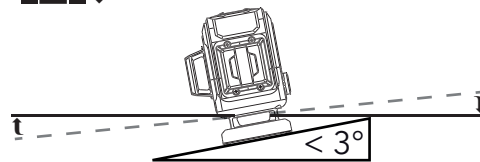
## USE

### ■ AUTO-LEVELLING



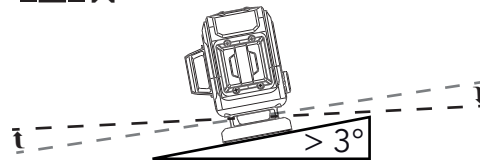
Slide the On/Off/Transport security switch [05] to the “ON” position. The laser is switched on, the pendulum levelling mechanism is released, and the instrument is able to level itself.

The laser can level itself in a range of approx. 3° in every direction.



This means the laser can show 100% horizontal or vertical lines when placed on a sloped surface of approx. 3° maximum.

In case the laser is placed on a surface that exceeds the 3°, a levelled horizontal or vertical laser line will no longer be possible.



The warning indicator [F] will flash fast and the laser lines will turn off.

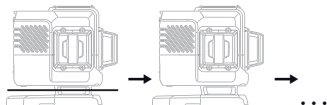
Place the laser device on a flatter surface, within the levelling range of 3° if possible. The laser will self level automatically when placed within its levelling range.

### ■ SWITCHING ON/OFF LASER LINES

When switching on the device, all 3 laser diodes will be activated.

#### — HORIZONTAL LASER LINES

To change the projected horizontal laser lines, press the H-button for horizontal lines [A].



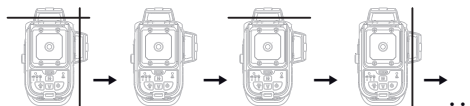
- Press the H-button [A] a first time to switch off the horizontal laser line [02].
- Press the H-button [A] a second time to switch on the horizontal laser line [02].
- ... (these two previous steps will repeat)

#### NOTE

We advise to set the horizontal line on your working height, using a tripod.

#### — VERTICAL LASER LINES

To change the projected vertical laser lines, press the V-button for vertical lines [B].



- Press the V-button [B] a first time to switch off all vertical laser lines.
- Press the V-button [B] a second time to switch on the front vertical laser line (V1) [02].
- Press the V-button [B] a third time to switch on the side vertical laser line (V2) [03].
- Press the V-button [B] a fourth time to switch on both vertical laser line (V1+V2) [02][03].
- ... (these four previous steps will repeat)

#### NOTE

When both vertical lines are switched on, you can measure an exact angle of 90° or show a plumb line (imaginary line between the cross on the floor and the cross on the ceiling)

## ■ SLOPE MODE



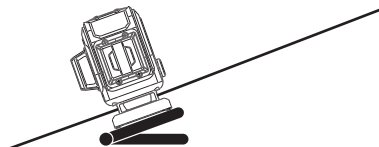
Slide the On/Off/Transport security switch [04] to "OFF" so the laser beams are turned off and the transport lock is active (pendulum is blocked).

Hold the Power button [D] for approx. 3 seconds. All laser lines will switch on without loosening the transport security (pendulum is still locked in position). The warning indicator [F] flashes slowly and the laser lines will blink every 8 seconds.

This warns you the laser is not levelled!

Hold the H-button / Power button [A] again for approx. 3 seconds to shut down the laser in slope mode.

## — MANUAL SLOPE



You can physically position the device at the desired slope by using an inclined surface or a slope adapter (optional accessory).

## NOTE

In slope mode, the laser lines no longer levelled automatically. A slow flashing warning indicator [F] and blinking laser lines will remind you the pendulum is locked and the laser will not level.

## ■ RECEIVER MODE



Press the receiver/power safe button [C] to activate the receiver mode. This button has three modes. The active mode is indicated by the Receiver/Power indicator LED [D]. Press the Receiver mode button [C] the required number of times until the desired mode is active:

GREEN: Full power

RED: Receiver mode

YELLOW: Power safe mode


When the Receiver/Power indicator LED [D] is green, laserlines can be picked up by a laser receiver.



## NOTE

All Futech laser will use 10Khz as frequency in receiver mode. Only receivers that can detect laser lines at 10KHz are compatible.

## TECHNICAL SPECIFICATIONS

Visibility	
Accuracy	± 2 mm / 10 m
Range with receiver	2x 40 m
Levelling range	± 3°
Levelling	Pendulum levelling
Slope function	Manual (via pendulum lock)
Tripod thread	1/4"
Laser wavelength	515 nm
Laser classification	Class 2, < 1mW
Power supply	Li-Ion battery 7.4V, 2200mAh
Protection	IP54
Weight	0,260 kg
Operation temperature	-5°C ~ +40°C



## DECLARATION OF CONFORMITY

Futech (Belgium) declares under its own responsibility that this device:

- 026.3FG, 3D FLOOR GREEN

is in conformity with the standards

EN IEC 61326-1:2021,

IEC 60825-1:2014

following the provisions of Directive(s)

2014/30/EU.

Lier, Belgium,  
July 01, 2025  
Patrick Wauters



Potential misprints are reserved. Images used are not strict. All features, functionality and other product specifications are subject to change without notice or obligation.



# USER MANUAL

other languages:



DA DANSK



DE DEUTSCH



ES ESPAÑOL



ET EESTI KEEL



FI SUOMEN KIELI



FR FRANÇAIS



IS ÍSLENSKA



IT ITALIANO



NL NEDERLANDS



NO NORSK



PT PORTUGUÊS



SL SLOVENŠČINA



SV SVENSKA



Facebook  
@futechtools



LinkedIn  
futechtools



World Wide Web  
futech-tools.com



YouTube  
@futechtools